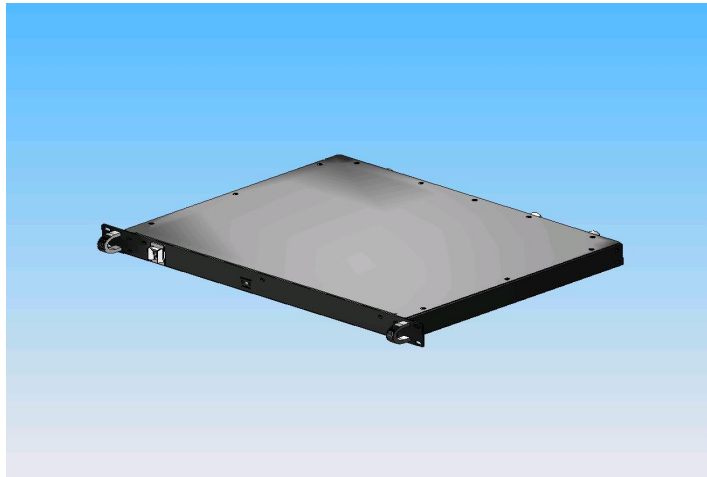




# TECHNICAL SPECIFICATIONS

**PSR-202A**  
**AC-DC POWER SUPPLY**

**+24 to +54 VDC, 75 W**  
**DUAL COAXIAL BIAS-TEE**



## FEATURES

**Universal AC Input.**  
**Active Power Factor Correction.**  
**IEC EN61000-3-2 Compliance.**  
**Integral EMI Filter.**  
**Low Output Ripple.**  
**OVP, OLP, OTP.**

## ENVIRONMENTAL

**Full Output, 0° to 50° C.**  
**Derate 2.5% per degree,**  
**from 50° C to 70° C.**  
**Storage Temperature -40° C to +85° C**  
**Humidity, Non-condensing: 5% to 95%**

## ELECTRICAL SPECIFICATIONS

### INPUT

**85 to 264 VAC.**  
**120 to 300 VDC.**  
**47 to 63 Hz.**  
**Power Factor 0.99 Typical.**

### OUTPUT

**Maximum Power: 75 W @ 50°C.**  
**Adjustment Range: 24 to 54 VDC.**  
**Overload Protection: Short Circuit,**  
**Case Temperature @ 110 to 145%,**  
**Over Voltage @ 10 to 40%,**  
**Dual Type N Coaxial Bias-Tee.**

# METROPOLE PRODUCTS, INC.

Metropole Products, Inc., P.O. Box 309, Stafford, Virginia 22555  
540-659-2132/Voice Fax/540-659-2133

Rev. 9/2007